

Industrial Property on busy main thoroughfare
8317 NE 23rd St.
Spencer, OK 73084, in Oklahoma County



7,980 Sq. Ft.

\$299,000

\$37.47 /Sq. Ft.
Office Showroom
with Shop Area
Vacant/ Owner-User
1.54 Acre Lot

For Sale by



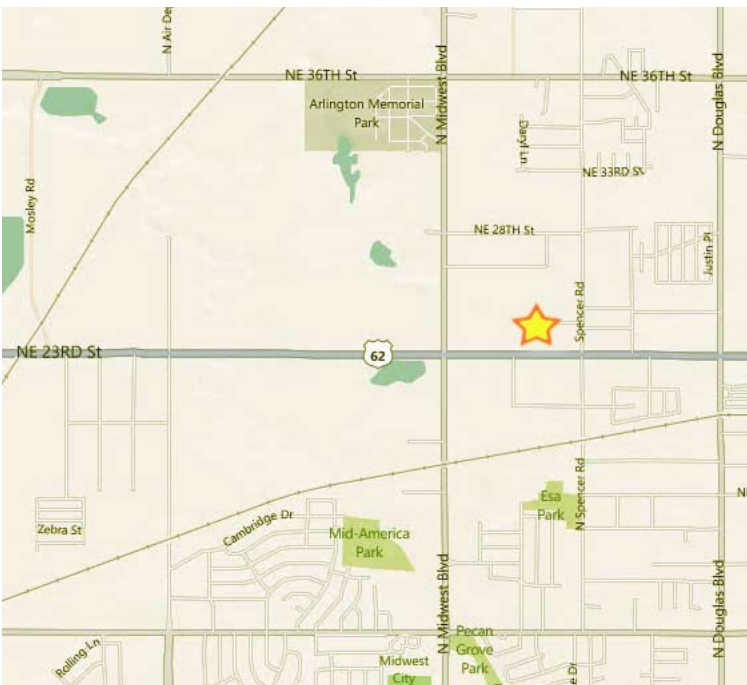
419-1000
ask for Chris

DESCRIPTION

Pre-Engineered, Insulated 7,980 Sq. Ft. Metal Building For Sale
4,480 Sq. Ft. Air Conditioned Retail Showroom and Office Space
3,500 Sq. Ft. Shop Area
Two Overhead Drive-In Doors for 2-Bay Workshop
1.54 Acre Site is 240 Ft. x 280 Ft.

240 Ft. Frontage on NE 23rd Street—Traffic Count Approximately 23,000 Vehicles Daily
Zoned Industrial

2010 Ad Valorem Taxes: \$3,347
Spencer City Water & Sewer
REDUCED to \$299,000



8317 NE 23rd St.
Spencer, OK 73084